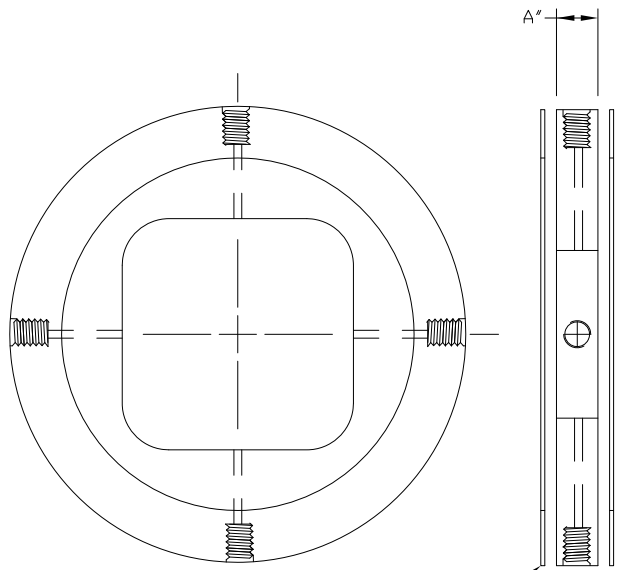


FULL FACE FLANGE (F)



RING STYLE FLANGE (R)  
(FITS INSIDE BOLT CIRCLE)

GASKETS  
(2 PCS) SHOWN

MODEL NUMBER

SW - R - P - 4 - B

WAFER STYLE

- FULL FACE FLANGE (F)
- RING STYLE (R)

MATERIAL

PIPE SIZE

GASKET MATERIAL

MATERIAL	SYMBOL
316 S.S.	SA
304 S.S.	SB
PVC	P
HDPE	H

PIPE SIZE			
LINE SIZE NPS	QTY PORTS	"A" THICKNESS (in)	ADDITIVE PORT SIZE (NPT-F)
2	4	1-1/2" FOR PVC 1-1/2" FOR HDPE 1-1/2" FOR SS	1/2"
3			
4			
6			
8			
10			

GASKET MATERIAL	SYMBOL
BUNA	B
VITON	V
EPDM	E
TEFLON	T
NONE	O

NOTES:

1. LARGER DIAMETERS ARE AVAILABLE PLEASE CALL FACTORY
2. DESIGNED TO WORK WITH BOTH FLAT FACED & RAISED FACE FLANGES
3. ALSO AVAILABLE FOR DIN, AUSTRALIAN & BRITISH FLANGES
4. CUSTOM SIZES, MATERIALS AND CUSTOM PORT ARRANGEMENTS AVAILABLE. CALL FACTORY FOR PART NUMBERS

UNLESS OTHERWISE SPECIFIED DIMENSIONS ARE IN INCHES DO NOT SCALE DRAWING	PROJECT NO.	STANDARD	INYO PROCESS			
	DRAWN	RT				
	CHECKED	ES	SLUDGE POLYMER INJECTION WAFER FOUR PORT			
	DESIGN APPROVED	-				
	MFG. APPROVED	-				
	QA APPROVED	-	SIZE A	DRAWING NO SW-1000	REV 5	
	RELEASE DATE	4-03-07	SCALE	NTS	WEIGHT	SHEET
						1 OF 1